

Your Global Reliability Partner

> 2023



Eastway Reliability Newsletter

THANK YOU TO OUR CUSTOMERS AND STAFF

Eastway Reliability would like to express our gratitude for choosing us as your reliability partner. Our company has continued to grow and develop over the last 12 months and our dedicated staff team have risen to every expectation with enthusiasm and diligence. Our newsletter outlines some of our key moments during the year, and as always do get in touch if you would like further information. We look forward to continuing our working relationship with you in the coming year and years ahead.



HIGHLIGHTS

COMPANY OVERVIEW 2023

STRATEGIC PARTNERSHIP WITH APLEONA

EUROPEAN CUSTOMER FOCUS

STAFF DEVELOPMENT & RESEARCH PROJECTS

COAST TO COAST US IMPACT





Your Global Reliability Partner

2023 OVERVIEW



2023, has been a remarkable year for Eastway Reliability, as we moved forward in securing our position as global reliability partner of choice in the sector. Our reputation as a company of integrity and excellence deepened further as our sales team met new customers across the world including Norway, France, The Netherlands, US and Singapore.

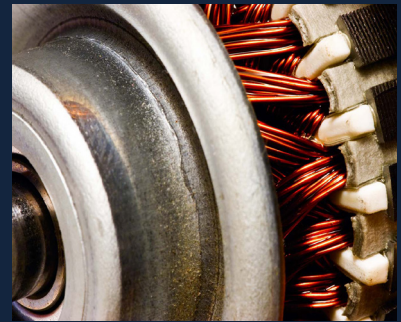
Our data driven and ongoing industrial and academic research & development, guarantees our customers are receiving cutting edge condition monitoring in their plants as we support their transition to industry 4.0 technologies. Placing you, our customers, at the forefront of all that we do, ensures Eastway provides the highest levels of quality support. We are immensely proud of our team's commitment.

Investing in the future growth and sustainability of the company, we announced our strategic partnership with Apleona Group in October.

We look forward to continuing our partnerships with you into the future and thank you for placing your trust in Eastway.

Elaine Berkery

'A level of professional expertise that is difficult to come across with 3rd party vendors, craftsmanship and reporting that delivers a high level of compliance qualification required for our facility.'



STRATEGIC PARTNERSHIP

Moving to support the future growth of Eastway Reliability we entered into a new and exciting partnership with Apleona Group.

Apleona are a leading European outsourced services provider in the pharmaceutical, commercial, engineering and technical sectors. The partnership expands Apleona's offering of predictive, machine learning-based maintenance and gives us access to markets and a broad international customer base, offering Eastway Reliability very significant development and growth opportunities. We are pleased and proud to be an important element in the further development of Apleona Group.



STAFF DEVELOPMENT & RESEARCH PROJECTS

Experienced Eastway team members, Maria Diaz and Edicson Santiago Bonilla Diaz both graduated from separate Masters projects this year. Company innovation was core to both their projects and we would like to congratulate them both on their efforts. We are pleased to share the details of their papers.



Maria Diaz investigated the:

INTEGRATION OF WIRELESS SENSORS INTO THE EASTWAY SAFEGUARD SYSTEM®: A DMADV METHODOLOGY APPROACH

This research project successfully integrated wireless vibration sensors into the Eastway Safeguard System® using the DMADV (Define, Measure, Analyse, Design, and Verify) methodology. The results highlighted the development of a robust system compatible with wireless technology and the ability to maintain high product quality.

MSc in Strategic Quality Management, Lean Sigma Systems

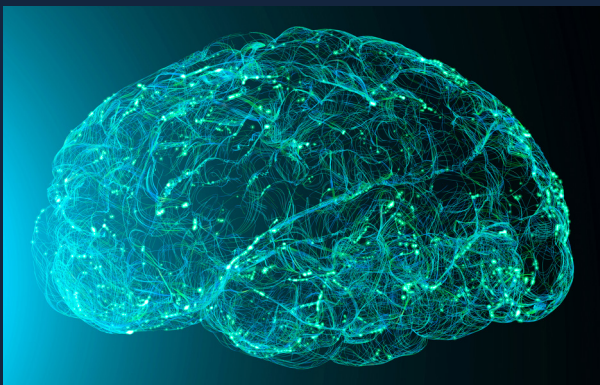


Edicson Santiago Bonilla Diaz investigated the:

NEURAL ARCHITECTURE SEARCH FOR BEARING FAULT CLASSIFICATION

This research performed a bearing fault classification by using neural networks evaluating the effectiveness of three machine learning models. The results underscore the significant potential of integrating advanced machine learning models, data augmentation, and NAS for effective bearing fault classification.

MSc. in Artificial Intelligence



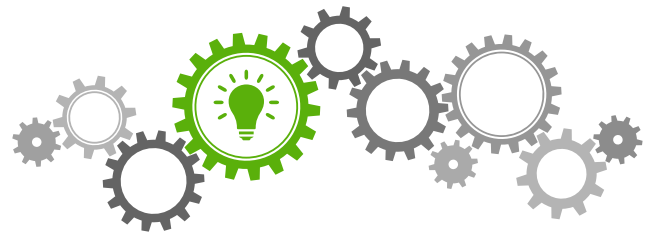
BONJOUR, BUENOS DIAS, GOEDEDAG, HELLO, GUTEN TAG!

French, Spanish, Dutch, English, German!

Embracing our European platform has been a crucial element within our expansion strategy over the last number of years. In 2023, we were able to further this through the addition of new languages to our multi-lingual webportal.

As a global reliability partner for multi-site manufacturers, Eastway are committed to meeting our customer's needs. The Eastway Safeguard System® Webportal is accessible to our customers wherever their plant is based in the world.

Our new partnership with Apelona Group brings extensive opportunities within the European market and Eastway looks forward to realising this potential.



PUSHING THE BOUNDARIES OF PREDICTIVE MAINTENANCE WITH THE EASTWAY SAFEGUARD® SYSTEM

During 2023, we continued to expand the scope of our Eastway Safeguard® System with several specialised application projects involving continuous online monitoring. These projects addressed direct customer needs and included:

- *Assessing Seal Condition Using Vibration, Acoustics And Temperature In Large And Small Molecule Reactor Agitators*
- *Evaluating Process Vibration For Impact On Product Quality In Capsule Filling*
- *Online Analysis of Oil Condition In Critical Production Gearboxes*
- *3 Phase Motor Current Monitoring On Critical High Amp Motor Drives.*
- *Wireless Monitoring of Air Flow Velocity On Dust Extraction.*

Come talk to us to explore your application.
Contact - kevin@eastwaytech.com



Your Global Reliability Partner



RELIABILITY IRELAND 2023

Our presence at this year's conference was a great success. Our stand and personnel promoted the company's key technological developments with Director, Kevin Berkery flying over from the US to deliver our presentation:

The Theory And Practical Application Of Vibration Analysis In Conjunction With Machine Learning

Kevin shared Eastway Reliability's latest innovations in the field of machine learning and vibration analysis with reference to both theoretical and practical applications.

His presentation generated plenty of questions back at our stand and the 'Eastway Reliability' shortcake biscuits were a hit too!

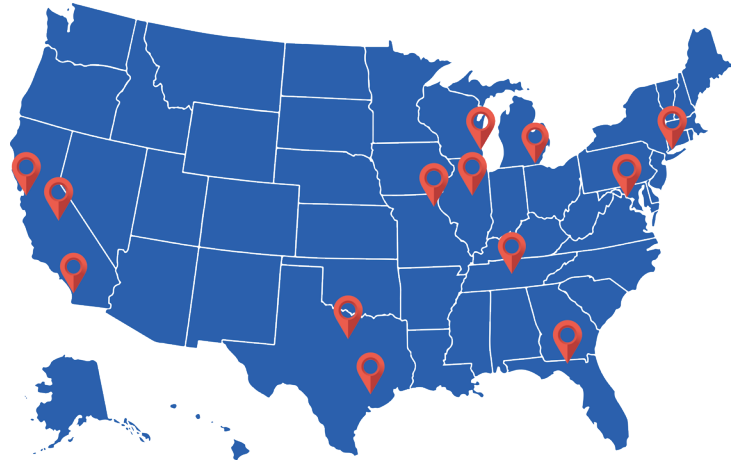
COAST TO COAST

2023 was a significant year in consolidating our US customer base.

As our position as Global Reliability Partner of choice grew within the sector, the impact was particularly felt within the US market.

We are delighted to report that Eastway is now supporting condition monitoring within multiple manufacturing plants including in Chicago, Detroit, Boston, San Diego, Pennsylvania and Texas.

We look forward to further advancement into the market in the year to come.



Eastway

Your global reliability partner 

CONTACT US

EASTWAY EUROPE
Mary Rosse Centre 3
Holland Rd., Castletroy
Limerick, V94 HRK2
Ireland

EASTWAY SINGAPORE
10 Seletar Aerospace Heights
Seletar Aerospace Park
#03 - 06-12
Singapore 797546

EASTWAY USA
1300 Clay Street
Suite 600
Oakland, CA 94612
United States

t: 00353 61 203933
e: europe@eastwaytech.com

t: 0065 9232 1203
e: asia@eastwaytech.com

t: 001 650 575 0535
e: usa@eastwaytech.com